

Service Data

Vickers®

Relief Valves

Solenoid Controlled Pilot Operated Relief Valves



(F3)–C/G/S/T5–(H)–03/06***(V)**(V)–M–(S*)***** (L)*****–100/110–EN**

*** NOTE**

On CG5-(H)0***C-*(V)-100/110 dual solenoid models, pilot valve & cover S/A are rotated 90° clockwise from body. Refer to pilot valve drawing for parts breakdown.

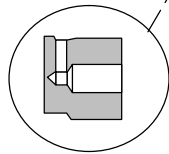
* Pilot Valve (See Table)
(DG4V-3(S)-*C-60 Shown)

▲ 232332 'O'Ring (4 Req'd)

▲■ 263497 'O'Ring

■ 329463 Plug
Torque 53-58 N.m.
(39-43 lb. ft.)

■ 285601 Seat



Assemble 285601 seat with cross hole facing up as shown.

▲■ 262361 'O'Ring

Inner Spring (See Table)

Outer Spring (See Table)

343154 Piston

Seat (See Table)

Sleeve ('H' High Flow Models Only)
(See Table)

696892 Bolt Kit (Includes 4 Bolts)
Torque 5.6 N.m. (50 lb. in.) Maximum

68905 Washer (4 Req'd)

1031 Screw (4 Req'd)
Torque 14.5-20.4 N.m. (11-15 lb. ft.)

■ Cover (See Table)

■ 343704 Plug &
▲ 263494 'O'Ring (See Table)

■ 398071 Plug &
▲ 263492 'O'Ring (See Table)

⊕◆■ 292230 Screw

■ 326317 Shim
(As req'd to obtain proper adj. range)

■ 1485 Locknut

⊕◆■ 283949 Retainer

■ 64520 Washer

■ 283948 Plunger

▲■ 262332 'O'Ring

■ Washer (See Table)

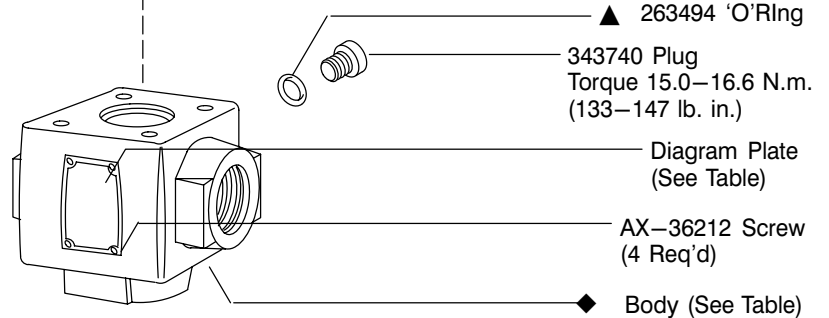
■ 422849 Spacer

■ Cover Spring
(See Table)

■ 290057 Piston

MODEL	SEAT	SLEEVE
C*5-03/06	343153	—
C*5-H06	589473	589472

MODEL	■ COVER S/A
C*5-(H)0*0A/F-B(V)-100/110	942432
C*5-(H)0*0A/F-C(V)-100/110	942433
C*5-(H)0*0A/F-F(V)-100/110	942434
C*5-(H)0*1A-B(V)-100/110	942435
C*5-(H)0*2A-B(V)-100/110	
C*5-(H)0**C-B(V)-100/110	942436
C*5-(H)0*1A-C(V)-100/110	
C*5-(H)0*2A-C(V)-100/110	942437
C*5-(H)0**C-C(V)-100/110	
C*5-(H)0*1A-F(V)-100/110	942437
C*5-(H)0*2A-F(V)-100/110	
C*5-(H)0**C-F(V)-100/110	



▲ 263494 'O'Ring

343740 Plug
Torque 15.0-16.6 N.m.
(133-147 lb. in.)

Diagram Plate
(See Table)

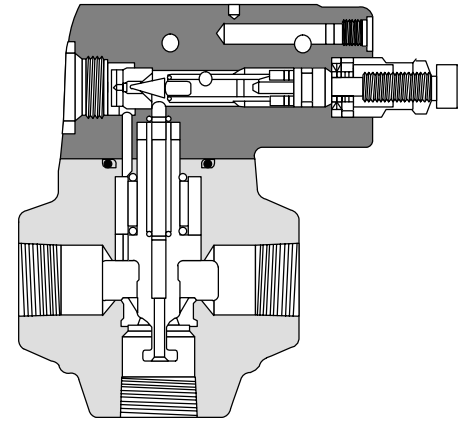
AX-36212 Screw
(4 Req'd)

◆ Body (See Table)

MODEL	◆ BODY
CS5-03**-*-100/110	590407
CS5-(H)06**-*-100/110	581701
CT5-06**-*-100/110	590348

MODEL	DIAGRAM PLATE	* PILOT VALVE
C*5-(H)0*0A(P)-*(V)-M-***-100	422864	DG4V-3S-0BL-M***-60
C*5-(H)0*0A(P)-*(V)-M-***-110		DG4V-3-0BL-M***-60
C*5-(H)0*1A(P)-*(V)-M-***-100	422865	DG4V-3S-2AL-M***-60
C*5-(H)0*1A(P)-*(V)-M-***-110		DG4V-3-2AL-M***-60
C*5-(H)0*2A(P)-*(V)-M-***-100	423814	DG4V-3S-2BL-M***-60
C*5-(H)0*2A(P)-*(V)-M-***-110		DG4V-3-2BL-M***-60
C*5-(H)0*0C-*(V)-M-***-100	422862	DG4V-3S-0C-M***-60
C*5-(H)0*0C-*(V)-M-***-110		DG4V-3-0C-M***-60
C*5-(H)0*2C-*(V)-M-***-100	422863	DG4V-3S-2C-M***-60
C*5-(H)0*2C-*(V)-M-***-110		DG4V-3-2C-M***-60
C*5-(H)0*0F(P)-*(V)-M-***-100	477211	DG4V-3S-0FL-M***-60
C*5-(H)0*0F(P)-*(V)-M-***-110		DG4V-3-0FL-M***-60

* Refer to pilot valve drawing for parts breakdown.



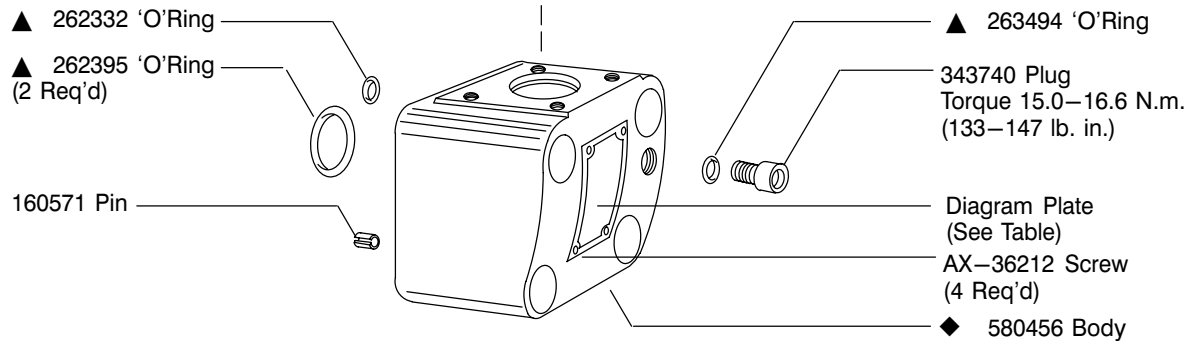
Relief valve sectional view without pilot valve

MODEL	■ COVER	■ PLUG/'O'RING (2 REQ'D)	■ PLUG/'O'RING
C*5-(H)0*0A-100/110	422828	—	—
C*5-(H)0*1A-100/110	424203	343740/▲ 263494	398071/▲ 263492
C*5-(H)0*2A-100/110			
C*5-(H)0**C-100/110			

MODEL	■ WASHER	INNER SPRING	OUTER SPRING	■ COVER SPRING
C*5-0***-B-100/110	—	2077	—	2280
C*5-H0***-BV-100/110		—	184458	
C*5-0***-C-100/110	233110	2077	—	583937
C*5-H0***-CV-100/110		—	184458	
C*5-0***-F-100/110	—	2077	—	2281
C*5-H0***-FV-100/110		—	184458	

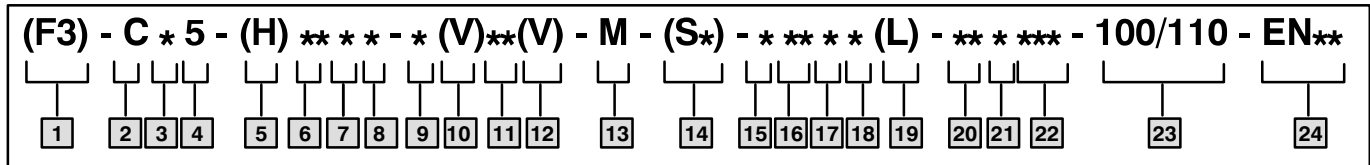
- Included In Cover S/A
- ⊕ Lubricate With Oil Before Assembly
- ▲ Included In F3 Seal Kit 696929 (includes pilot valve seals)
- ◆ Not Available For Sale

NOTE
Parts Prefixed With A Symbol Available Only In Kits.



CG5-(H)06

Model Code



1 Seals for mineral oil & fire resistant fluids

2 Relief valve

3 Connections

G – Subplate mounting

S – Straight threads

T – NPTF threads

4 Solenoid controlled

5 High flow

Omit for standard models

6 Valve size

03 – 3/8"-.8750 straight thread

06 – 3/4"-1.0625 straight thread or 3/4" NPTF

7 Pilot spool function

0,1, or 2 Indicates venting condition

8 Pilot spool spring arrangement

A – Spring offset

C – Spring centered

F – Spring centered, shift to center

9 Pressure range

B – 125–1000 psi

C – 500–2000 psi

F – 1500–3000 psi

10 High vent (Req'd for high flow models)

Blank – Omit for low vent models

11 Manual override options (included in pilot valve model code)

Blank – Plain override solenoid ends only

H – Waterproof override solenoid ends only

H2 – Waterproof override both ends of single solenoid

M – Serviceable manual overrides in solenoid ends only

P2 – Plain override both ends of single solenoid

Y – Lockable manual overrides solenoid ends only

Z – No overrides in either end

12 Solenoid energization identity

Blank – Standard arrangement for ANSI B93 9 (energise solenoid A for flow P to A port)

V – Solenoid identification determined by position of solenoid. (Solenoid A at port A end and/or solenoid B at port B end. (All 4 & 8 spools are always V code)

13 Flag symbol heading electrical options & features

14 Spool position monitoring switch (tank pressure rating 10 bar only)

S1 – Switch, normally open, U coils only

S2 – Switch, normally closed, U coils only

S3 – Switch, wired normally open, P*

S4 – Switch, wired normally closed, P*

S5 – Switch, free leads, FW & FJ only

15 Coil type

U – ISO 4400

F – Flying lead

SP1 – Single 6,3 series spade to IEC 760

SP2 – Dual 6,3 series spade to IEC 760

16 Electrical connections (F type coil only) omit if not required

T – Wired terminal block

PA – Instaplug male receptacle only

PB – Instaplug male & female receptacle

PA3 – Three pin connector

PA5 – Five pin connector

17 Housing (F type coils only)

W – 1/2 NPT thread wiring housing

J – 20 mm thread wiring housing

18 Electrical options

1 – ISO with fitted plug, U type coils only

6 – ISO with fitted plug, with lights, U type coils only

19 Solenoid indicator lights (F build only) To be used with T terminal block models.

(Omit if not required)

20 Coil identification

21 Pilot valve code (tank pressure rating)

2 – 10 bar (145 psi) use with switch models S*

5 – 100 bar (1450 psi) DG4V-3S-60

6 – 160 bar (2300 psi) DG4V-3-60

7 – 210 bar (3000 psi) DG4V-3-60

22 Pilot valve port orifices

23 Design

100 – DG4V3S-60

Standard pilot valve

110 – DG4V3-60

High performance pilot valve

24 Special modifications (omit if not required)

11 Thru **22** included in pilot valve model code